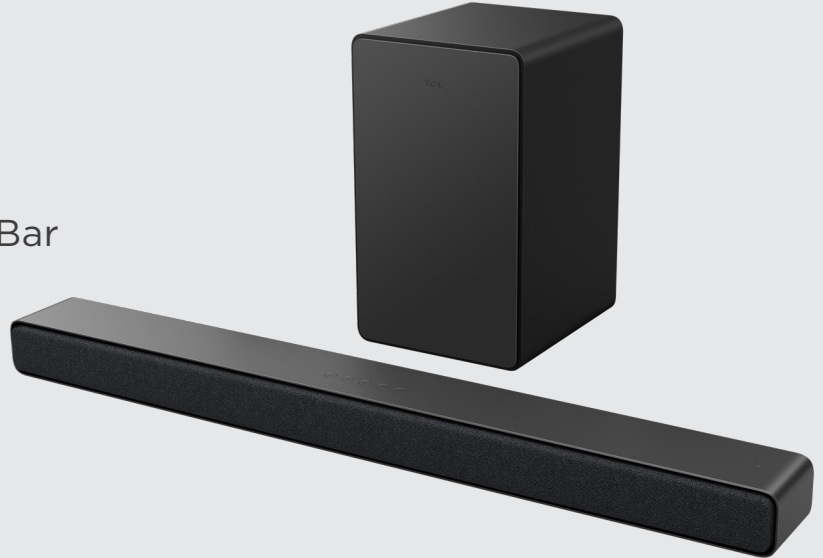




Q-SERIES

3.1 Channel Dolby Audio Sound Bar
with Wireless Subwoofer



CHANNELS: **3.1**




MODEL: Q6310

Home Theater, Made Better.

Experience superior sound quality with our 3.1 channel sound bar and wireless subwoofer. Enjoy your favorite entertainment with crisp, clear sound and deep, rich bass making movies and music truly come to life. A dedicated center channel offers clearer dialogue never missing a moment of the conversation. DTS® Virtual:x™ delivers enveloping sound that appears to emerge from above, beside, and behind you, providing an immersive experience in any room. Stream all your favorite music and podcasts from apps like Pandora, Spotify, YouTube Music, and more, wirelessly from your smartphone, tablet, or laptop with Bluetooth® wireless technology.

It's Roku TV Ready and designed to work seamlessly with your TCL Roku TV, so you'll enjoy smooth setup, easy access to sound settings, and compatibility with your TCL Roku TV remote. With HDMI ARC all you need is one cable for a simple hassle-free setup. The sound bar's sleek design and advanced technology deliver crisp, clear audio, while the wireless subwoofer adds depth and power to your movies, music, and more. It's the perfect addition to any home theater setup. TCL Q-Series Sound Bar is Home Theater, Made Better.

Product Highlights

 <p>Dolby Audio</p> <p>Studio-level tuning as the artist intended with Dolby audio technology.</p>	 <p>DTS® Virtual:x™ 3D Surround Sound</p> <p>Adds dimension to what you hear with virtual 3D sound that envelopes you.</p>	 <p>Wireless Music Streaming with Bluetooth®</p> <p>Stream all your favorite music and podcasts wirelessly from your Bluetooth® device.</p>
--	--	---



With a lineup of award-winning televisions, audio products, mobile devices, and appliances, TCL delivers meaningful experiences through thoughtful design and the latest technology, helping you enjoy more of the things you love.



SOUND BAR FEATURES	
Channels	3.1
Sound Bar Dimensions (W X H X D)	35.4 x 2.7 x 3.9 in 89 x 6.9 x 9 cm
Sound Bar Weight	5.1 lbs 2.3 kgs
LED Indicator	Breathing LED Light Bar
Keypad	On/Off, Inputs, Bluetooth, Vol -, Vol+
Roku TV Ready	Yes
FEATURES	
Dolby Processing	Dolby Digital (Dolby Audio,DD+)
DTS processing	DTS Virtual:X
AUDIO (SOUND BAR)	
Maximum Audio Power (Watts)	350W
EQ Settings	Standard / Voice / Music Movie / Game / Sports
SUBWOOFER	
Subwoofer Included	Yes
Subwoofer Dimension (W x H x D)	9.8 x 14.4 x 8.7 in 24.9 x 36.6 x 22 cm
Subwoofer Weight	12.3 lbs 5.58 kgs
Wired/Wireless/Built-in	Wireless
Subwoofer Driver Dimensions	6.5" driver
CONNECTIONS—INPUTS/OUTPUTS	
HDMI ARC	Yes
Bluetooth	Yes
Optical	Yes
USB Playback	Yes
3.5mm AUX line-in	Yes
2.5mm AUX	Yes

USB FEATURE	
Audio Format Support	MP3
ACCESSORIES (INCLUDED)	
Warranty Info	Yes
Wall Mount Template	Yes
Quick Start Guide (QSG)	Yes
Direction For Use (DFU)	Online version
Power Cord Type (Soundbar)	Yes, Detachable
Power Cord Type (Subwoofer)	Yes, Detachable
HDMI cable	Yes
Wall Mount kit	Yes
Remote Control	Yes
Remote Control Battery	Yes, AAA x2
WARRANTY	
1 year limited warranty (English)	

* All Product Specifications Are Subject to Change Without Notice.

PRODUCT & PACKAGE INFORMATION		
Package Size (WxHxD)		38.4 x 17.0 x 10.7 in 97.5 x 43 x 27 cm
Total Package Weight		22 lbs 9.98 kgs

1. Sound pressure level measured using pink noise at 1 meter, C-weighted.
2. Requires your TV to support HDMI-eARC/ARC and HDMI-CEC, also commercially known as T-Link, Anynet+, SimpLink, BRAVIA Link, EasyLink or VIERA Link. All technology names mentioned are the trademarks or registered trademarks of their respective companies.

All product specifications are subject to change without notice.